



www.tenova.ae



Key sectors we benefit


Rail & Marine

Building & Infrastructure

Oil & Gas

Renewable Energy

www.tenova.ae




Highly specialized
Integrated Precast
Concrete



Composite
Elements

Diversified, Integrated Engineered Products and Services



Metal
Components



Specialised
Steel
Fabrication



Robotic
Solutions



Renewable
Energy
Solutions

Contents

Introduction	6
Our Modus Operandi	8
Production Facilities	8
Etihad Rail Rig Crossing Project	10
A Case Study	10
Etihad Rail Rig Crossing Project	10
Key Project References	13
Quality Policy, ISO 9001:2015, Licenses	14
PRODUCTS & SERVICES >>>>	
Ultra Luxury Property Development	18
Rail & Marine	20
Precast and Fabricated Solutions	20
Marine Metal/Composite Components	21
Precision Metal Components	21
Infrastructure	22
Precast Solutions	22
Oil & Gas	23
Precision Metal Components	23
Building	24
FACADES	24
Building	26
FACADES	26
Renewable Energy	28
SOLAR/KINETIC FLOORING	28
Robotics	30
ROBOTIC PIPE AND U/W INSPECTIONS	30
Human Resource Supply	31
SKILLED MANPOWER SUPPLY	31

Services

- ✓ Pretender/Contracts Design and Estimates
- ✓ Value Engineering
- ✓ Detail Design/Engineering
- ✓ Project Management
- ✓ Prototyping
- ✓ Manufacturing/Logistics Management
- ✓ Mock Up/Assembly
- ✓ Installations
- ✓ QA/QC

Introduction

Established in 2016, with a deep understanding, background of extensive industry knowledge and cognisance for the requirement of technology driven advanced solutions for the construction and industrial sector, Tenova's primary focus has been in providing intelligent, sustainable, innovative advanced technologies in developing Special integrated Precast Concrete products, Composites, precision metal structures/components, robotic solutions, renewable energy solutions among others.

We believe that an end to end' business model is indispensable with Research & Developer, manufacturing vendors, supply chain and Customers, creating an extra ordinary experience with added business values.

Having gained numerous years of local and international experience in providing services and solutions to industrial, manufacturing, construction sectors, Tenova is fully equipped to deliver value added customised services.

Our Site installations are carried out by our associate organisation "AVS Line Technical Servives LLC"

Our integral business values includes

- Being creative and innovative to introduce disruptive solutions for challenging and complex construction environment.
- Adapting highly agile and lean project Delivery methodologies with an integral commitment to meet deadlines
- Prompt & transparent communication and dealing.
- Taking ownership's on behalf of out customers and adding values for the each project and business transactions we undertake.

Our Vision' is to be a global leader in providing specialised innovative services and solutions.

Our Mission' is to deliver high quality, innovative and cost effective solutions to the region.

The way we create an unforgettable customer impact through our services

Project Management, Contracts Management, Critical Planning for Integration, Engineering, Production and Installations.

- ▶ Collaborating with the End users, Consultants, Manufacturers in proposing applications of Precast Concrete, Metal & Composite Constructions, other products/ services supply.
- ▶ Devising end to end solution for the Engineering, Manufacturing, Supply and installation of systems and other alternative options for fixing details including design calculations.
- ▶ Program/Schedule management with the inter related works.

Engineering & Prototyping

- ▶ Engineering, Design & Shop Drawings, preparation of 2D/3D renders of the design and technical details of

Complete system and solutions

- ▶ Ensures that the Drawings are Fully Coordinated with other Services and system elements.
- ▶ Method statement, Risk Analysis, HSE policies.
- ▶ Stringent Procurement and QA/QC policy is ensured from Raw material selection, to production process to final end product.
- ▶ Mock-up Installations are carried out as per the requirements of the Project.

Production, Installations, Quality Control and Handovers

- ▶ Highly experienced Management team along with Supervision, ensures that the Production, Supply and (or) installations meets all Schedule, Quality & Safety Assurance/Control and Management.
- ▶ Final products/Services shall be ensured meeting all requirements.
- ▶ Material and workmanship warranty shall be rendered as per the industry standards.

Our Modus Operandi

HOW WE DELIVER OUR EXCEPTIONAL PRODUCTS, SERVICES AND SOLUTIONS ?

- ✓ Extensive background and in-depth industry knowledge and engineering expertise in delivering complex and large scale construction and infrastructure specialized integrated projects and solutions.
- ✓ Tenova's core expertise is in delivering precast and metal integrated projects having many layers of technical complexities by adopting strong controls on Design/Engineering Drawings, to Method statements to Production, Assembly, Mock ups/ installations.
- ✓ Adapting customized QA Processes, Engineering and Agile Project Management methodologies enables us to add highest value to the project life-cycle
- ✓ Key emphasis on Health, safety and environment protection during the entire project life-cycle
- ✓ Maintaining superlative Communication skills among all stakeholders.
- ✓ Driving innovative and sustainable engineering, production, practice and solutions.
- ✓ Full cognizance of End User requirements, extensive collaboration with the Supply chain partners enables us in providing exceptional products and value added services, exponentially exceeding stakeholder expectations.
- ✓ Management with a combined experience of over 40 + years in UAE and Middle East industrial sectors in delivering Multiple large scale and complex projects.

Production Facilities

Precast Concrete - Umm Al Quwain, UAE

Metal/Cement/Composite Cladding - DIC, Dubai, UAE



www.tenova.ae

A Case Study

Etihad Rail Rig Crossing Project

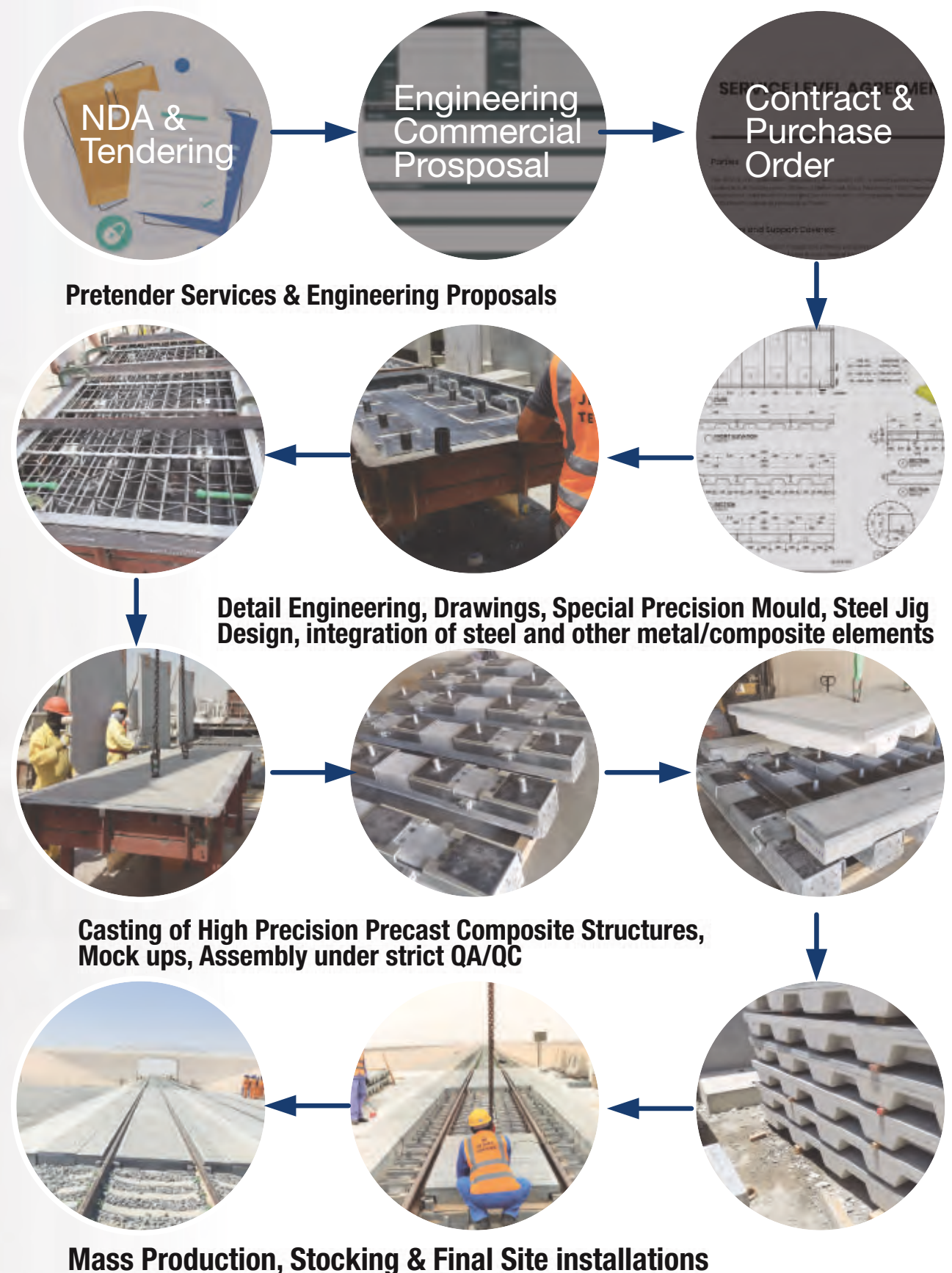
A case study has been showcased here exhibiting the way we deliver services from a project life-cycle point of view.

Contracts, Engineering, Manufacture, Supply, Prototyping, Installation of Highly Specialised Precision Precast, Composite, Steel Components for Etihad Rail and GCC Rail Networks

Tenova successfully delivered the Etihad Rail Rig Crossing system by integrating highly complex precision engineered precast concrete, composites and metal components.

Tenova was able to achieve the project aggressive time line, budget and QA/QC controls by leveraging an agile project management approach and maintaining highest degree of supervision in all levels of process from raw material procurement, to Engineering controls. Integration of supply chains, assembly/production/ Site supervision without any LTA's.

Our Mantra has always been putting practice to action things from ground level up.



*in association with JD Rail Australia/JACOBS/Etihad Rail

www.tenova.ae

Delivering each project with the highest quality standards

Key Project References


NOTABLE EXPERIENCE IN DELIVERING COMPLEX AND CHALLENGING PROJECTS

Project	Consultant	Contractor	Owner
Engineering, Manufacturing & Supply, Mock up installation, of Specialised Rail Rig Crossing Precast/Metal /Composite Elements.	Jacobs	JD Rail	Etihad Rail
Engineering, Manufacturing & Supply/install, of HPC (High Performance Concrete) Facade Panels	Lacasa	Condor	TECOM/ Meta
Engineering, Manufacturing & Supply/install, of Glass Reinforced Cladding Facade panels		AFC	Al Sharq Investment
Engineering, Manufacturing & Supply, of Robotic inspection system for the Pipe lines	NA	NA	Drydocks World
Engineering, Manufacturing & Supply, of Robotic inspection system for the Pipe lines	CH2M Hill International	DUTCO	Dubai World
Manufacture and supply of Metal components for Armoured Vehicles	NA	NA	Streit Armour
Manufacture and supply of various HPC cladding to Villas, Commercial buildings	NA	NA	Private Owners
Construction of Ski Dubai & Car Park (Mall of Emirates)	MACE/ HYDER	Laing O Rourke	MAFI
Turnkey Construction of Art of Living Mall, Dubai	Lacasa	Airolink	MMS Global

Quality Policy

ISO 9001:2015, Licenses



	Tenova General Trading LLC	Doc No.: TENOVA-QMS-P-01
	QUALITY POLICY	Rev No. :00 Issue Date :27 th Jun, 2022

Tenova General Trading LLC firmly believes that a quality performance is key to ensure sustainable business in Project Management, Engineering, Manufacturing and Supplying of special Concrete, metal, composite, renewable energy & robotic product solutions & services and other general trading products by operating a Quality Management system in accordance with the requirements of ISO 9001:2015. Thus, it shall be considered as integral part in business decision-making process that is beneficial to all the Company's Stakeholders.

Hence, Tenova General Trading LLC is committed to:

- Satisfying applicable requirements by ensuring that client and applicable statutory and regulatory requirements are determined, understood and consistently met.
- Continual improvement of the quality by ensuring the risks and opportunities that can affect conformity of contractors and consultant's services and the ability to enhance customer satisfaction are determined and addressed and the focus on enhancing client satisfaction is maintained.
- Implement and maintain an effective QMS that provides guidance on objectives and performance standards and ensure that there is strong leadership and very clearly defined responsibilities and accountabilities for all levels of the organization.
- Ensure the quality policy and quality objectives are established for the QMS and are compatible with the context and strategic direction of the Company.
- Ensure that the resources needed for the QMS are available; including training, support, work environment and encouragement and communicate the importance of effective quality management and of conforming to the ISO 9001:2015 requirements.
- This policy will be communicated to all employees and available to all.
- Employees and other interested parties are expected to co-operate and assist in the implementation of this policy, which will lead them to improve their and our performance

This policy will be reviewed annually in the Management review meeting and where deemed necessary will be amended and re-issued.


Managing Director
(Brij V Rag)



رخصة تجارية Commercial License

تفاصيل الرخصة / License Details

رقم الرخصة	764118	License No.
اسم الشركة	تجريف التجارة العامة ذ.م.م	Company Name
اسم التجاري	تجريف التجارة العامة ذ.م.م	Trade Name
الشركاء المؤسسون	ذات مسؤولية محدودة	Legal Type
تاريخ الصلاحية	14/08/2016	Issue Date
تاريخ الانتهاء	13/08/2024	Expiry Date
رقم الرخصة الم	764118	Main License No.
عضوية الغرفة	274186	DCCI No.
	0	D&B D-U-N-S ®
	رقم سجل التجارى	Register No.
	1242018	

الطراف / License Members

رقم الشخص/No.	الاسم/Name	الجنسية/Nationality	الصفة/Role	الحصة/Share
632751	ببرجي صادق امينيل راجاداك كاموتيل بادمانابهان	الهند/India	مدير/Manager	
	BRIJI VADAKKAMOOTIL RAG VADAKKAMOOTTIL PADMANABHAN			

نشاطات الرخصة التجارية / License Activities

تجارة عامة
General Trading

العنوان / Address

صندوق بريدي	341548	P.O. Box	تلفون	971-04-2999145	Phone No
رقم قطعة	214-282	Parcel ID	فاكس	971-04-2999146	Fax No
البريد الإلكتروني / Email	ebriji@gmail.com		هاتف جتحرک	971-50-3588210	Mobile No

المكتب 306 لهك محمد عبيدوشقر قبالسي - فيرة - لقر مود

الملاحظات / Remarks

رقم الوصل
15180020
Receipt No.
تاريخ الطباعة
26/08/2023
Print Date
6:45



يتمكنك التجديد رخصتك لتجارية من خلال الدوسيل النصيرة القصيرة، أرسل رقم الرخصة إلى 6969 (دوبلصالت) للحصول على إذن الفع.
Now you can renew your trade license by sending a text message (SMS). Send your trade license number to 6969 (Du/ Etisalat) to receive payment voucher.

Get FREE access to Zoho One for the first year

احصل على زو ون مجاناً للفترة الأولى



Zoho.com/det

وثيقة إلكترونية معتمدة صادرة رقمياً عن إدارة الاقتصاد والتجارة دبي. يرجى التحقق من الوثائق الإلكترونية للوزارة لتجديد رخصتك. هذا هو مستند إلكتروني معتمد صادر من إدارة الاقتصاد والتجارة. يرجى التحقق من الوثائق الإلكترونية للوزارة لتجديد رخصتك.
this is a certified e-document issued without signature by the department of Economy and Tourism .Kindly Scan the QR Code to Verify the certificate

شهادة تسجيل العضوية Membership Certificate

رقم الرخصة	764118	License no.
رقم لعضوية	274186	Membership no.
رقم سجل التجارى	1242018	Registration no.
اسم التجاري	تجريف التجارة العامة ذ.م.م	Trade Name
الشركاء المؤسسون	ذات مسؤولية محدودة	Legal Status
نوع النشاط	تجارة عامة	Activity
تاريخ التسجيل	14/08/2016	Member Since
تاريخ الصلاحية	14/08/2016	Date of Issue
تاريخ الانتهاء	13/08/2024	Expiry Date

الملاحظات

This certificate shall be invalid incase of any alteration without chamber's authorization

For online verification of this Certificate, please visit our website
<http://www.dubaichamber.ae/verify>

غرفة تجارة وصناعة دبي
Dubai Chamber of Commerce & Industry

هاتف 4 2280000 (+971) | Tel (Within UAE) 800 CHAMBER (800 2426237) | P.O. Box 1457 - Dubai, U.A.E. | فاكس 4 2211646 (+971) | customercare@dubaichamber.ae | www.dubaichamber.ae

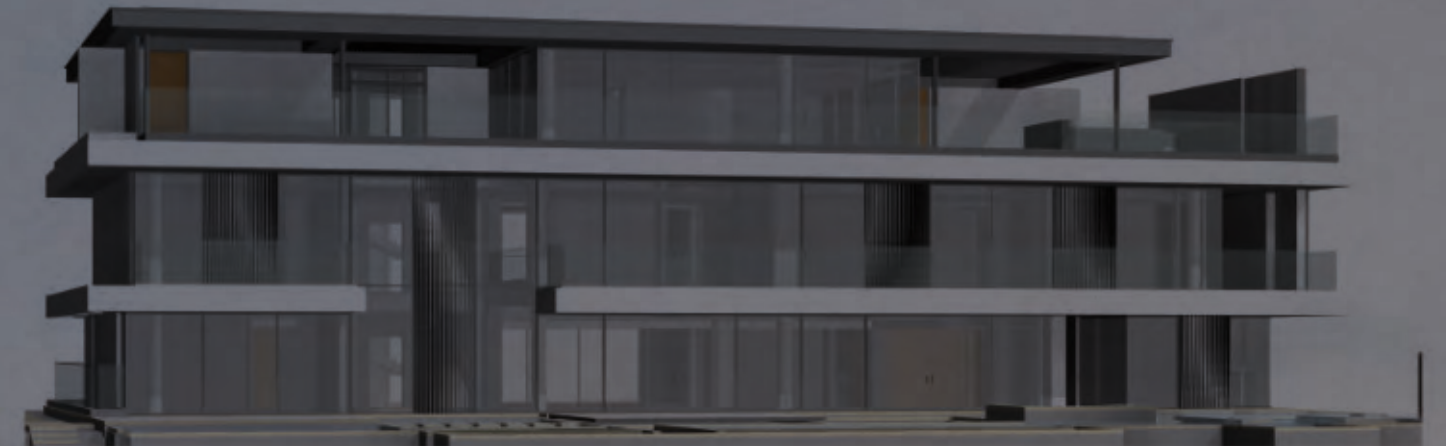
تعتبر هذه الشهادة لاغية في حال أي كسب أو تعديل عليها دون اعتماد ذلك من الغرفة

للتأكد من صحة بيانات الشهادة يرجى الرجوع إلى موقع الغرفة
<http://www.dubaichamber.ae/verify>

Ultra Luxury Property Development

Being in the Dubai/UAE property development industry since the last 02 decades, we are providing our expertise and consultation in developing high-end luxury residential, commercial, and hospitality projects in the region.

- Our vision is to set new global benchmarks within the ultra-high-end property segment by providing our expert services to the investors by partnering with the best architects, interior designers, builders, artists, and artisans.
- Our Core expertise lies in providing services as follows
 - » Business Plan for Luxury Property Development ROI
 - » Identifying and Selection of high worth Lands/Plots/ Properties in the region yielding maximum return on investment on the location itself
 - » Developing Plan of new build or retrofit/upgrade of the Plot/ Properties.
 - » Developing most modern/futuristic architectural plan, structural/MEP designs, Interior/Automation Designs, Landscape Designs with sustainability and renewable energy integration's.
 - » Appointing Architects, Contractors, Interior Fit outs, MEP, Automation vendors.
 - » Highest level of Local market and statutory know how on materials, services, and approvals
 - » Project Management of the development from cradle to grave, ensuring time, quality, cost and scope control.
 - » Devising and securing Off Plan Global selling opportunities yielding the maximum return on investments.



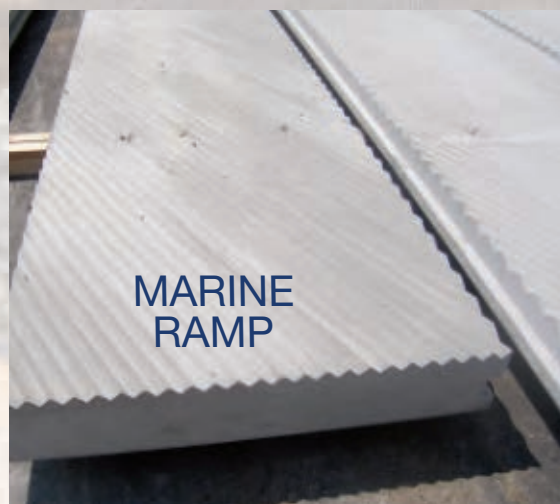
Rail & Marine

Precast and Fabricated Solutions

RAIL RIG CROSSING

Engineering, Manufacturing, supply of special Rail crossing elements for Rail networks across the globe.

Engineering details , comprehensive QA process in place with Site installation services and consultations ensures that the products deliver are of the highest standards meeting the End use functions seamlessly compared to any similar globally manufactured products.



Working in a marine environment often requires a unique solution – we understand that each project is dependent on the site conditions and landscape so our team of Engineers are available to collaborate with our clients to devise the best solution.

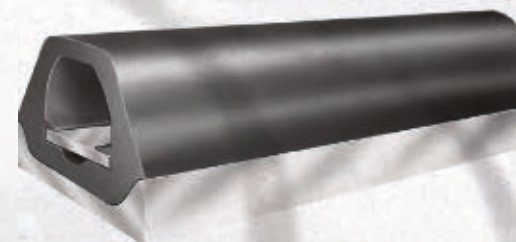


Other Product range for Engineering, manufacture and supply includes:

- ◆ FLOOD DEFENCE
- ◆ SEA WALLS
- ◆ BREAKWATERS
- ◆ JETTY BERTHS
- ◆ PIERS
- ◆ RAMPS
- ◆ CAUSEWAYS

Providing any customized Precast, Metal Embeds solutions with Design Engineering/Site Support services.

Marine Metal/Composite Components



Specialized Composite Rubber Fenders



Highest quality precision metal components for the Rail and Marine industries utilizing state of the art technology and machineries.

CNC Lathe, Drilling & Milling Machine

Planar.Broaching, Honing Machines

Water, jet, laser, plasma cutting

Our Services includes,

Sourcing Raw Materials under stringent QA process

Design/Engineering and Shop drawing

Material, Sampling

Prototyping

Mass production, allocating and utilizing multiple ISO production facilities partnered with us, to be able to meet any production volume and deliveries

Logistics including assembly, installation services for certain range of products.

Serving industries with value added, innovative, sustainable solutions

Please send your Enquiries to sales@tenova.ae or call us at +971 (0) 4 2999 145/46

Infrastructure

Precast Solutions



UG SOLUTIONS

We are providing specialized precast Solution for UG services including Design, Engineering, Production and installations

- ◆ **MANHOLES**
- ◆ **ELECTRICAL JUNCTION BOX**
- ◆ **DUCTS/TROUGH & COVER**
- ◆ **TANKS**



Providing any customized Precast, Solutions with Design, Engineering/Site Support services.

- ◆ **CAST STONE**
- ◆ **BENCHES**
- ◆ **PLANTERS**
- ◆ **BINS**
- ◆ **SEATINGS**
- ◆ **UHPC ELEMENTS**

Oil & Gas

Precision Metal Components



COUPLING



SHEAVES



BUSHING



SPROCKET



Manufacture and supply of any and all customized metal solutions with all necessary Engineering support.

Highest quality precision metal components for the Oil & Gas Sectors utilizing state of the art technology and machineries.

CNC Lathe, Drilling & Milling Machine

Planar.Broaching, Honning Machines

Water, jet, laser, plasma cutting
Robotic Welding machines

Oil & Gas Precision components requires as much precision as Automotive Components, and hence the tooling and Automation of the production process is vital to meet the Quality, time and Budget requirements of the Customer.

Partnering with several ISO production companies enables us to meet all the above criteria and exceed engineering and production expectations exponentially.

Building

FACADES

EXCEPTIONAL ARCHITECTURAL AESTHETICS • WORLD'S HIGHEST QUALITY SURFACE FINISH

Introducing first time to UAE/South Asia

- Sustainable • Cost efficient • high performance Concrete Facade Products

DESIGN

&

SUSTAINABILITY

Offering the most versatile solutions for all spaces and styles. Keeping the current and future design trends, these products promote a unique look to the spaces and enable the customization of the rooms and external facades with different uses of layouts, even with interactive elements. Application of these designs dramatically transforms the building elements into breathtaking Aesthetics.

The Elements are impeccably designed to adapt with its surrounding environment, leading to an overall coherent architectural look and feel.

More details at <https://cladall.tenova.ae/>

Manufactured in UAE, production curing is done by moist. This process eliminates the emission of polluting gases in the atmosphere and minimizes the spending of energy. Part of the composition of the products takes concrete waste, which comes from the remains of the production, thus avoiding the generation of debris and reducing the wearing out of the extraction of raw material from nature.

To avoid waste, our production sector takes advantage of natural daylight during the operation of the machines in all the factories. The remainder of water used in the production process is not dismissed, being 100% recycled. The water is subsequently treated and reused. The product meets all sustainability aspects as per the Green Building requirements.

Other GRC/UHPC/GRHPC Solutions

High-strength concrete is a versatile and hard-wearing material and is therefore ideally suited for facade panels. There are many options for creating an exciting facade, as you can get facade panels in different sizes, shapes, colors and surfaces, and at the same time there are different suspension systems with both visible and hidden fittings.

We source the Raw materials and ingredients for GRHPC from UAE, Denmark & US and utilises the most advanced manufacturing facility in UAE for moulding/casting the panels

Architectural concrete
Architectural concrete is one of the most important design tools in modern architecture. Concrete is a versatile material and can be used in many

different ways. Architectural concrete is therefore also included in the vast majority of construction tasks, whether it is a building with extreme shapes, bridges with tall towers or narrow elements with unusual structures.

GRHPC

Many of our products are cast in ordinary molds for soft casting. However, it has been shown that injection molding is an interesting alternative to soft casting, as it offers many more possibilities for shaping and working with the concrete. Injection molding can e.g. used in connection with the casting of decorative facade elements. In injection molding, glass fibers are used to reinforce the concrete, and hence the name GRHPC - glass fiber reinforced high performance concrete.



Building

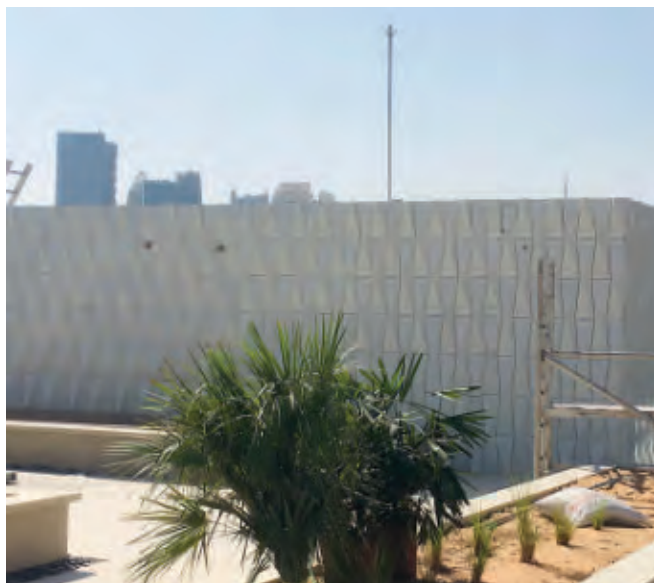
FACADES



(HPC) High Performance Concrete Facade Panels installed in a Private Villa in Aweer, Dubai



Glass Reinforced Concrete Panels installed at W Hotel & Residence, Palm Jumeirah, Dubai



(HPC) High Performance Concrete Facade Panels installed on the Rooftop of Meta, RHQ, Tecom, Dubai



Glass Reinforced Concrete Panels installed at Al Habtoor City

Renewable Energy

SOLAR/KINETIC FLOORING

First time in UAE/Middle East

Everyone should be aware of the energy transition and know about the vast potential that sustainable energy offers. This precious knowledge is very important now, and crucial for generations to come. And playing is the very best way for children to explore and learn about the world around them.

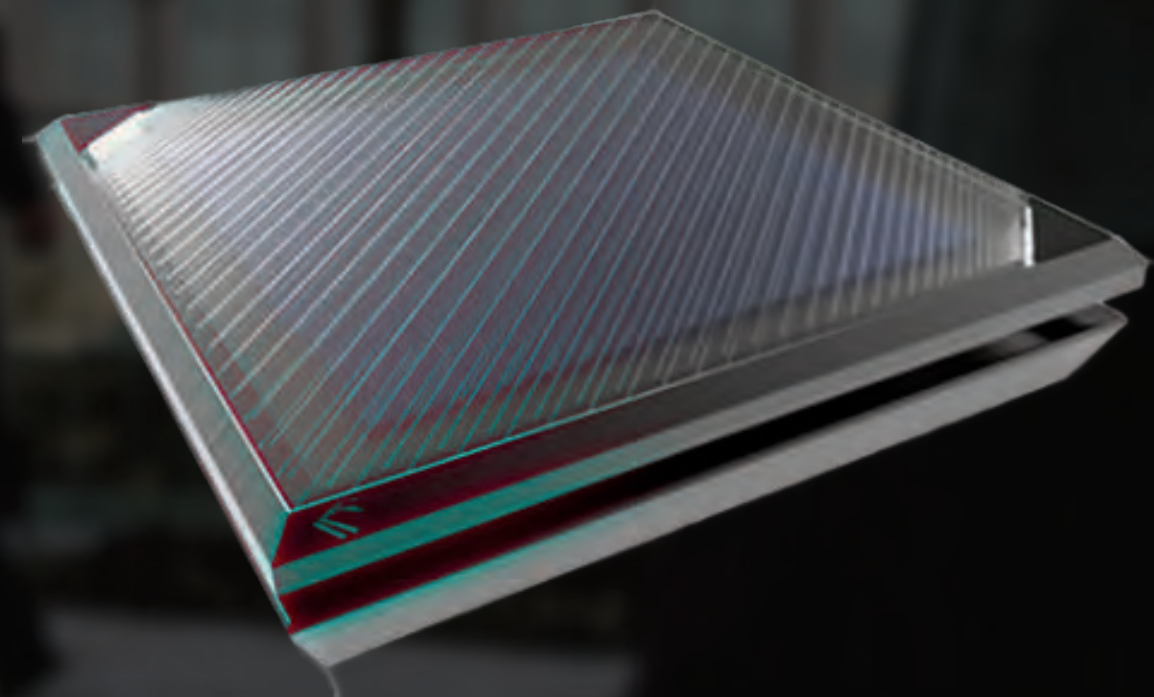
The Solar module combines these factors by demonstrating that awareness of sustainable energy can be very simple – in a way that corresponds to how children see the world. The module is both active and interactive. Long story short,

This module is a unique, durable, interactive and educational resource that adds great play to your outdoor space.

Renewable energy source

This module consists of 9 walkable solar modules that are 60 x 60 cm each, with a top layer of sturdy anti-slip glass. The module is equipped with sensors that respond to movement, providing fast and interactive play on the floor. This approach integrates the style of gaming that kids know from tablets, laptops and phones, shifting the experience from indoor to outdoor.

The floor is connected to the local electricity grid at the location. A well-designed, clearly structured dashboard displays how much energy the module yields. Besides showing solar energy levels, the dashboard also lets you check out all the game challenges and see the scores. Let's crush that high score!



Robotics

ROBOTIC PIPE AND U/W INSPECTIONS

World's most advanced and versatile Robotic Inspection system
inspections upto depths of 120 mtr Under water operating Capabilities



Advantages of Advanced Pipeline Remote inspections:

- Saves a great deal of operational expenditures, the best adaptive solution for conducting preventive routine maintenance regime and above all its Safe!!!
- When it comes to remote pipeline inspection, very few compare to the value delivered by imaging devices. Aside from being a non-invasive testing and observation method, it also allows for faster inspections without damaging the pipes in the process. The portability and ability to remotely control the equipment drastically reduces the amount of manpower needed resulting in immense cost cutting.

- The detailed information sent by the imaging device eliminates any ambiguity in the pipeline inspection, rectification maintenance process including the formulation of appropriate solutions. Spot repair can therefore be done properly and in less time.
- The safety of the process extends to the well-being of workers as well because they no longer have to be physically inside the sewer system to conduct inspections. Limiting the



exposure of workers to toxic gases and contaminated materials in the sewer system is something that is priceless.

Please send your inquiries to sales@tenova.ae for any and all remote inspection requirements.

Human Resource Supply

SKILLED MANPOWER SUPPLY

For any Organization, skilled manpower is the backbone of the business, and utilizing them efficiently and resourcefully will ensure to reduce or eliminate resource wastages.

So we specialize in supplying highly skilled and result oriented manpower on Contract basis to the Oil & Gas, Marine/ Infrastructure industry, and in effectively reducing the human resource leveling burden of the Organization in managing the resources for the project efficiently.

Marine, Dredging, Ship building

- Engineers/Supervisors
- Welders (TIG, MIG, MAG)
- Pipe Fitters
- Fabricators
- Iron workers
- Drill operators
- Lathe operators
- Shear cutting workers
- Locksmith
- CNC Operator
- Fitter/ship

Oil & Gas

- Supervisors
- Driller
- Maintenance Technician
- Drilling Engineer
- Petroleum Engineer
- Drilling Superintendent
- Plant Operation Engineer
- Field Service Technician
- Wire line Operator



Management &
Supervision of
Engineering,
Procurement,
Production,
installations and
Training

**Ensuring
success of
each project
we undertake
with utmost
consciousness.**



Delivering exceptional solutions and services

Partnering with Global Technology Solution providers

PO Box 341548, Dubai, UAE

T: +971 (0) 4 2999 145

F: +971 (0) 4 2999 146

E: reachus@tenova.ae

www.tenova.ae